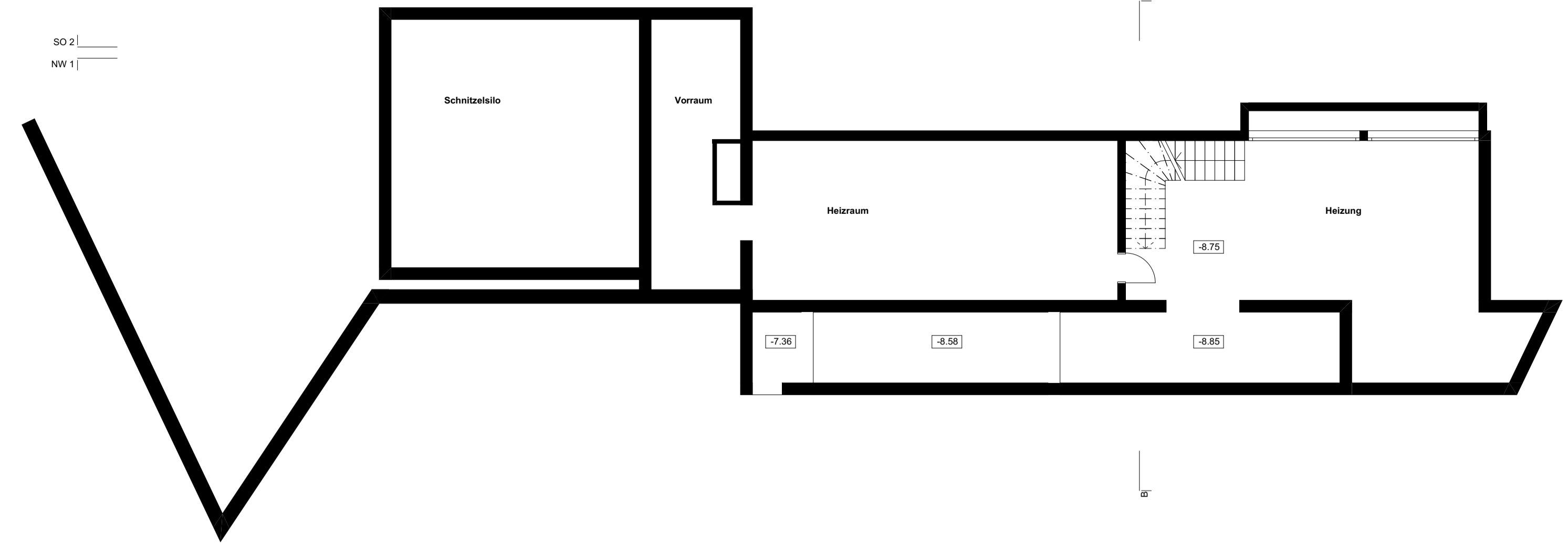


SO 2
NW 1

SO 1
NW 1



3. Untergeschoss

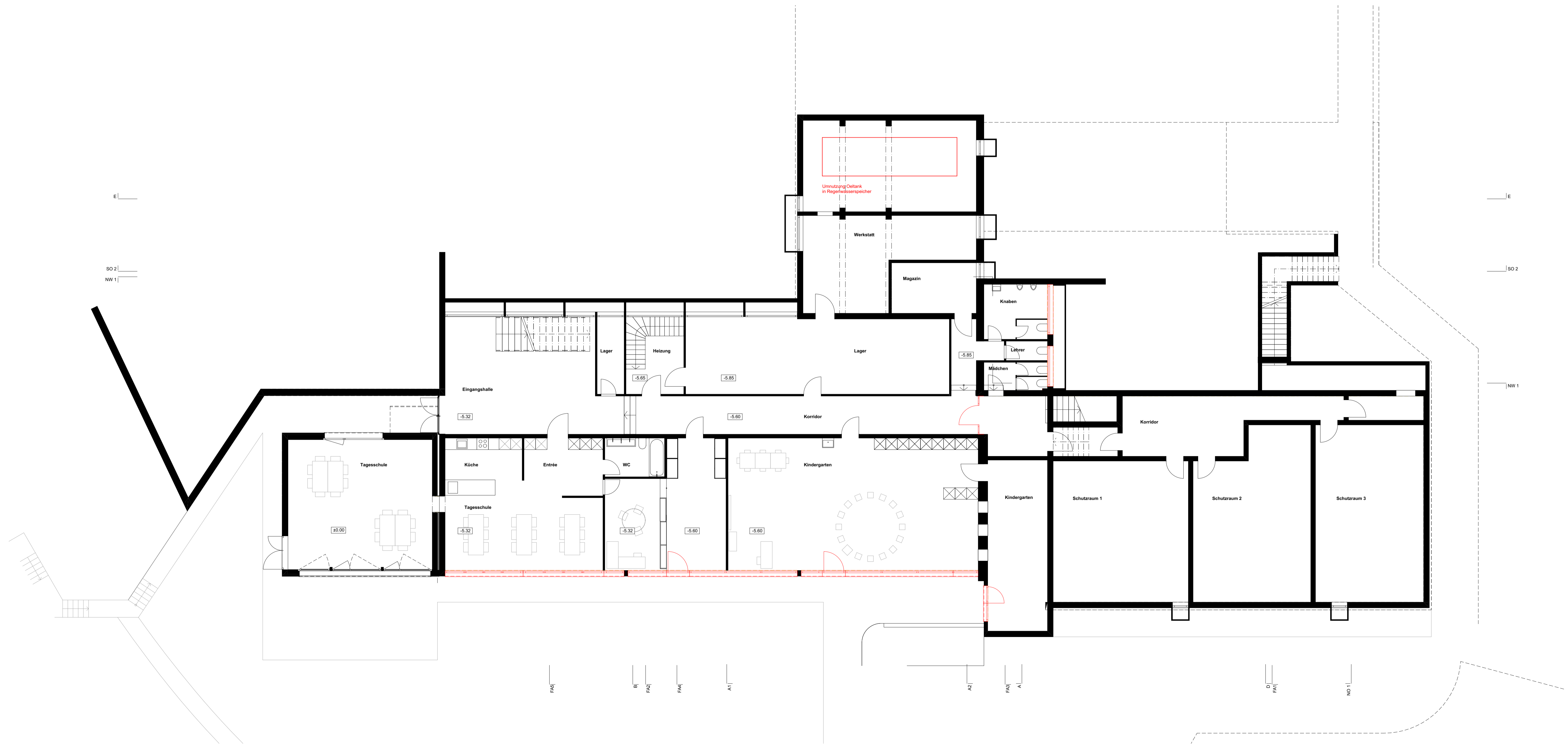
E
SO 2
NW 1

E

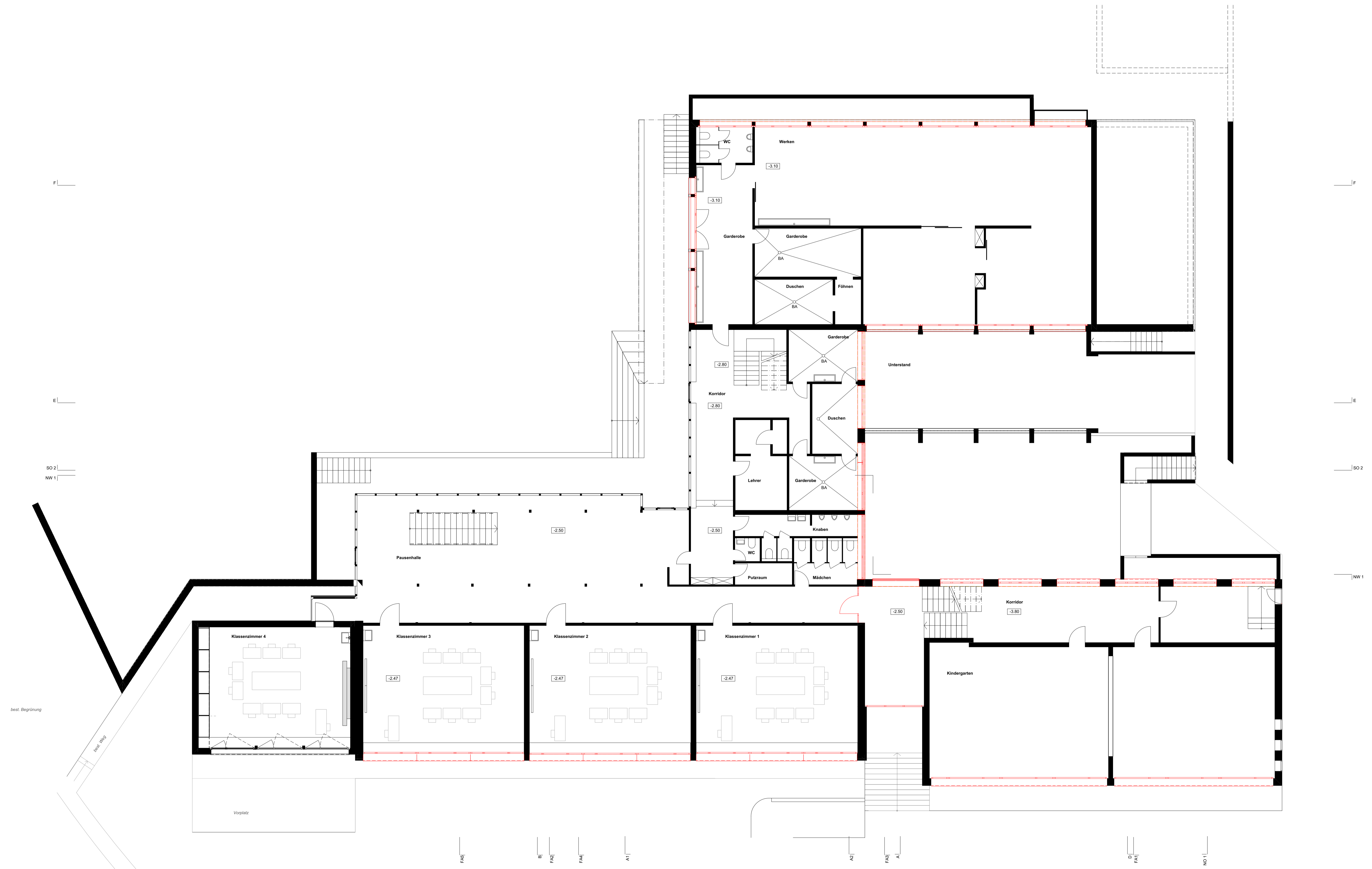
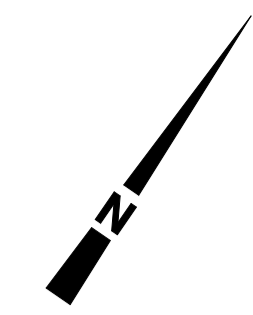
SO 2
NW 1

SO 2

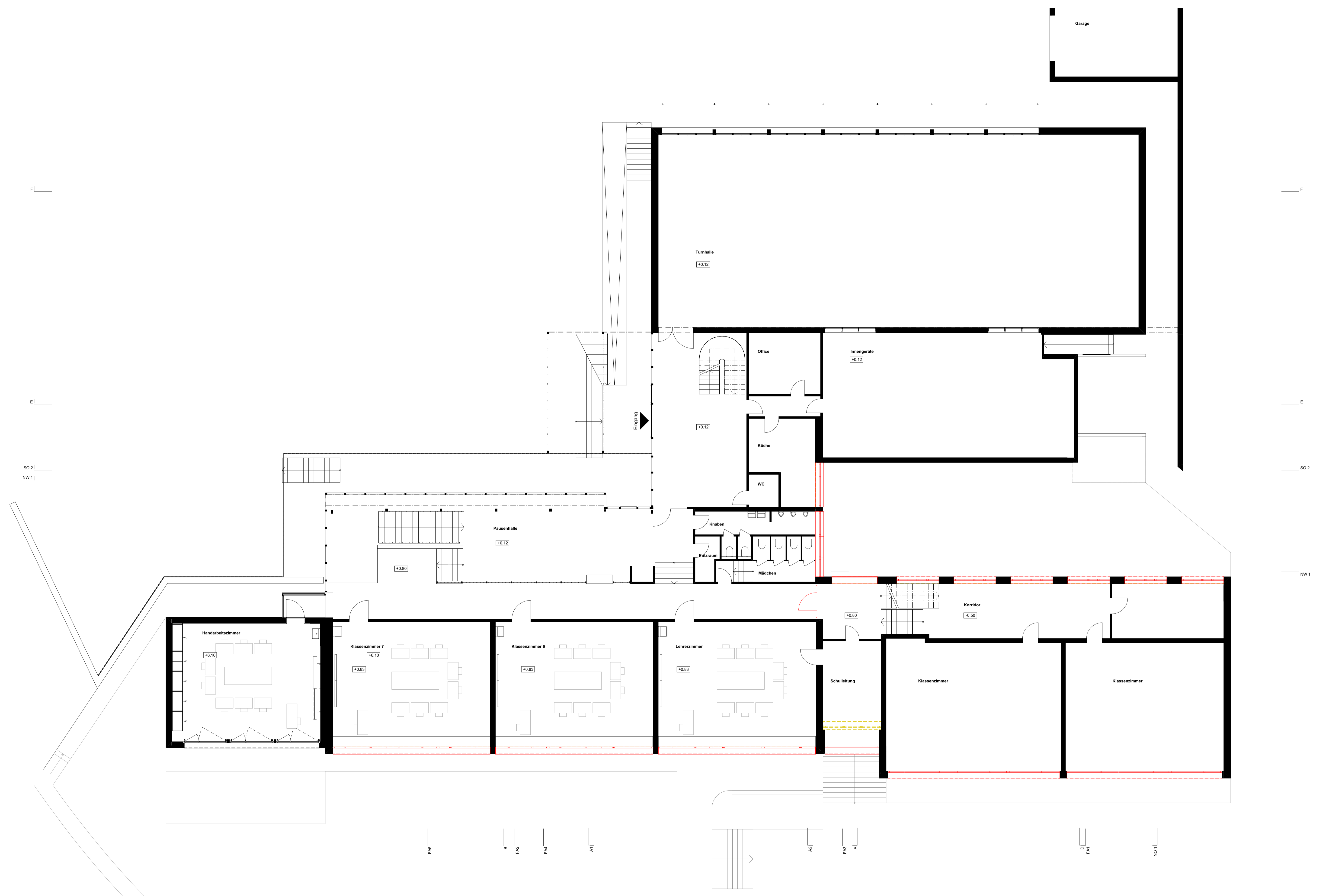
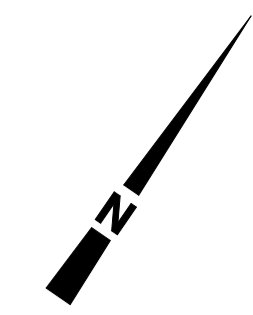
NW 1

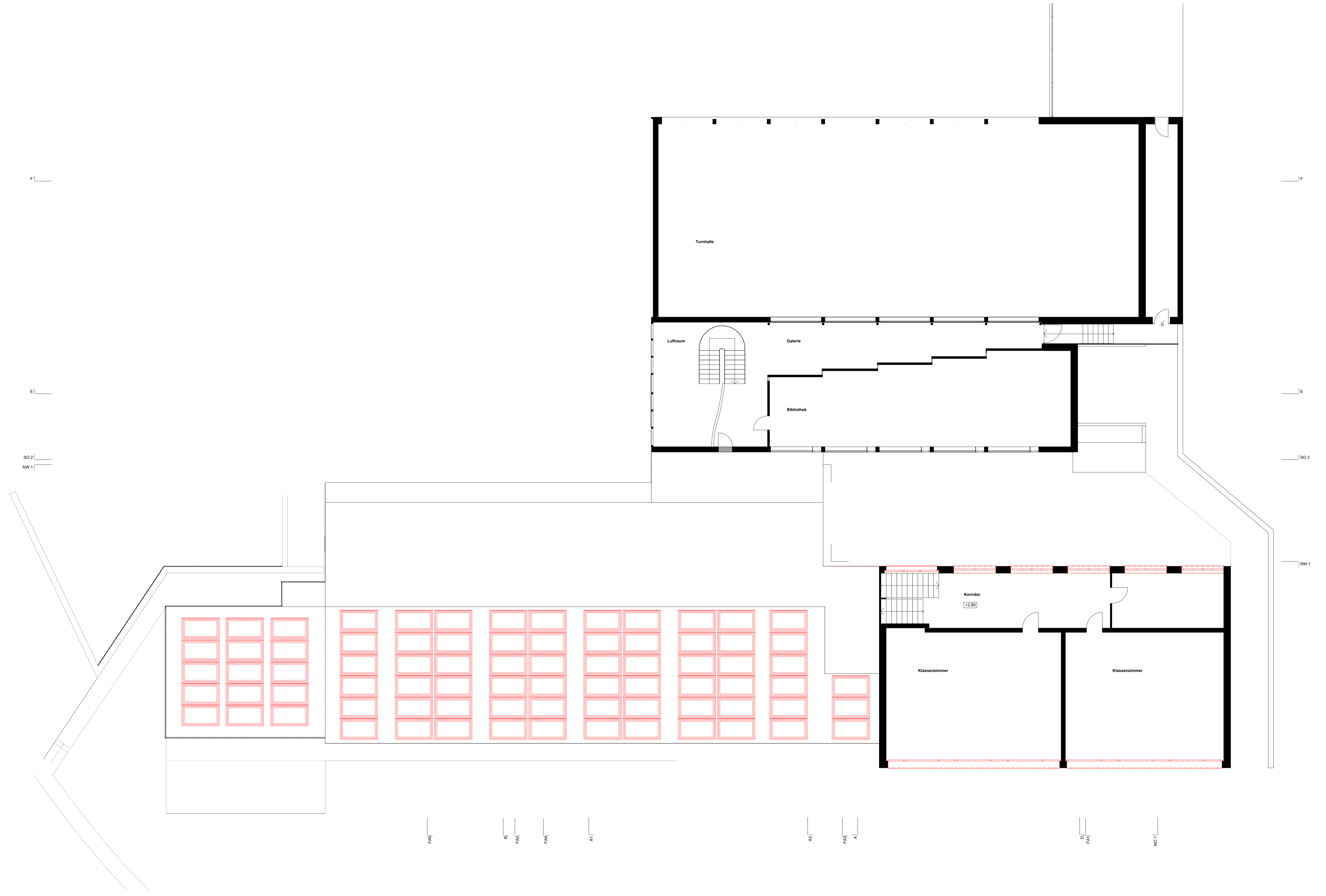
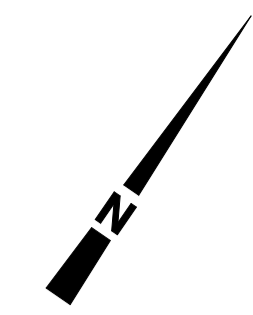


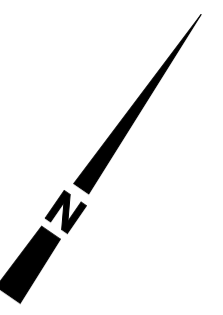
2. Untergeschoss



best. Begrünung
Innen Weg







F1

F

E1

E

so 2
NW 1

so 2

NW 1



FAS

B
FAS

FAS

A1

A2

FAS
A

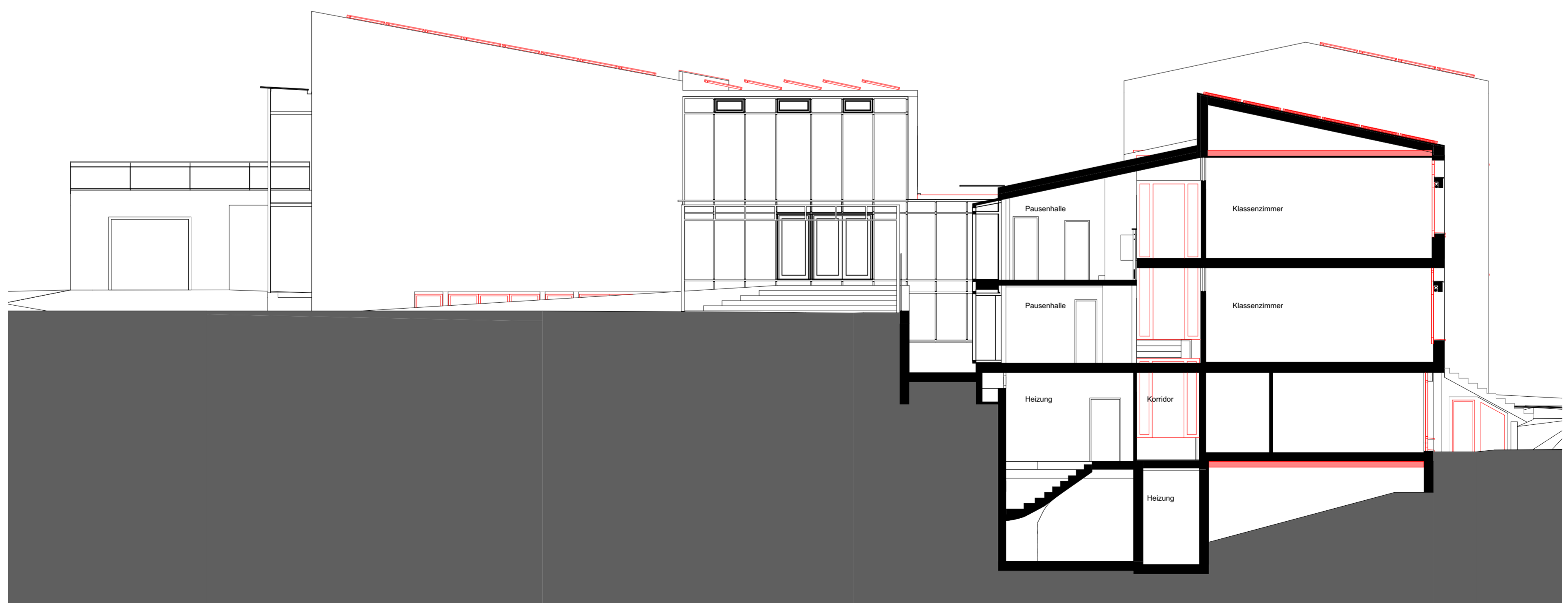
D
FAS

NO 1

311	Einwohnergemeinde Safnern		
	Sanierung Gebäudehülle Rächli		
Bergstrasse, 2553 Safnern			
Projekt	Schnitt A B		Mst: 1:100
Pl.Nr. : 311-2/106	Datum: 11.01.2023	Rev. : 29.03.2023	Format: 52 60
k2p Architekten GmbH Gurzelenstrasse 31 2502 Biel Tel. 032 328 50 00 Fax 032 328 50 01 mail@k2parchitekten.ch www.k2parchitekten.ch			



Schnitt A-A



Schnitt B-B

311

Einwohnergemeinde Safnern
Sanierung Gebäudehülle Räßli
Bergstrasse, 2553 Safnern

Projekt

Schnitt C | D

Mst: 1:100

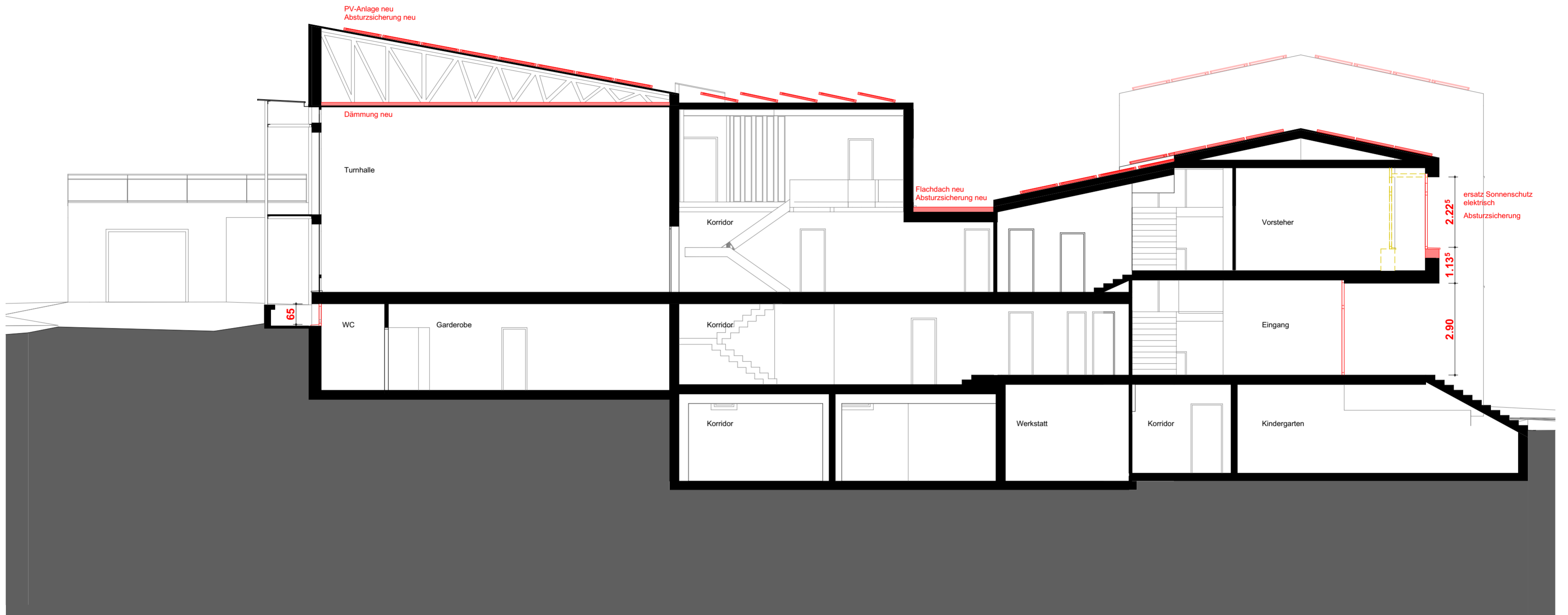
Pl.Nr. : 311-2/107

Datum: 11.01.2023

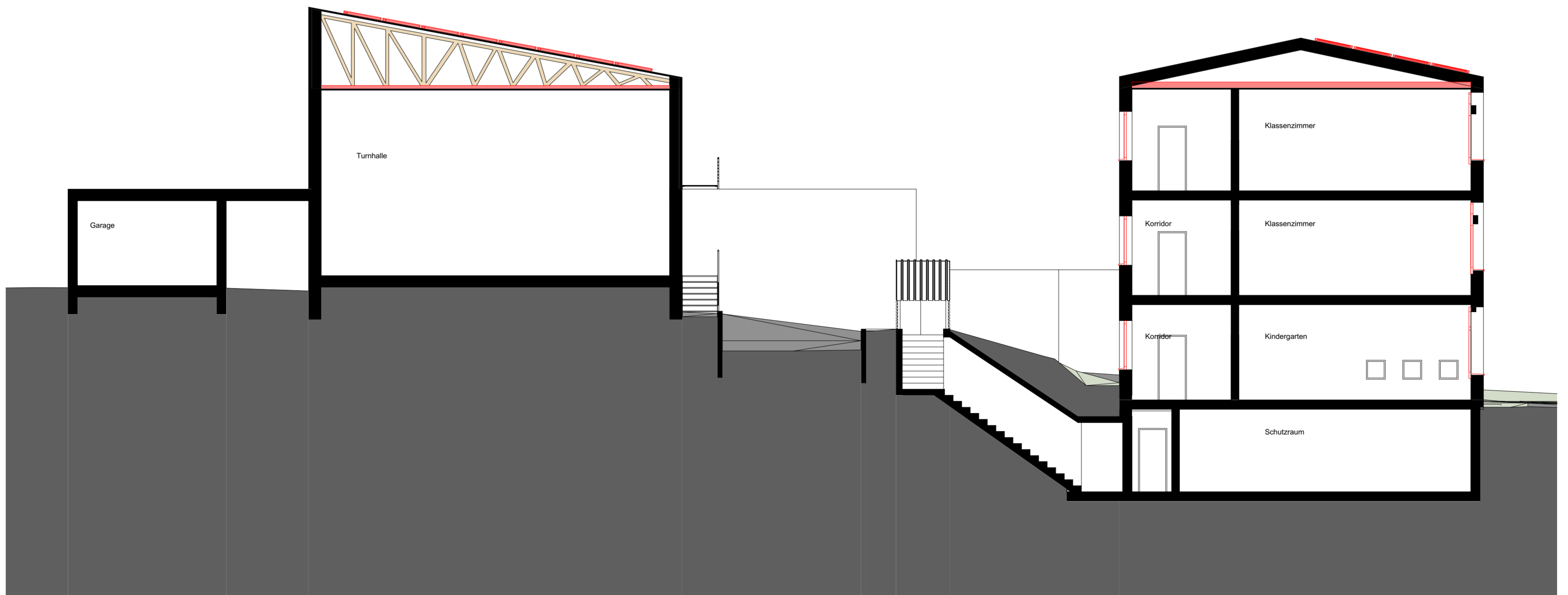
Rev. : 29.03.2023

Format: 52 | 60

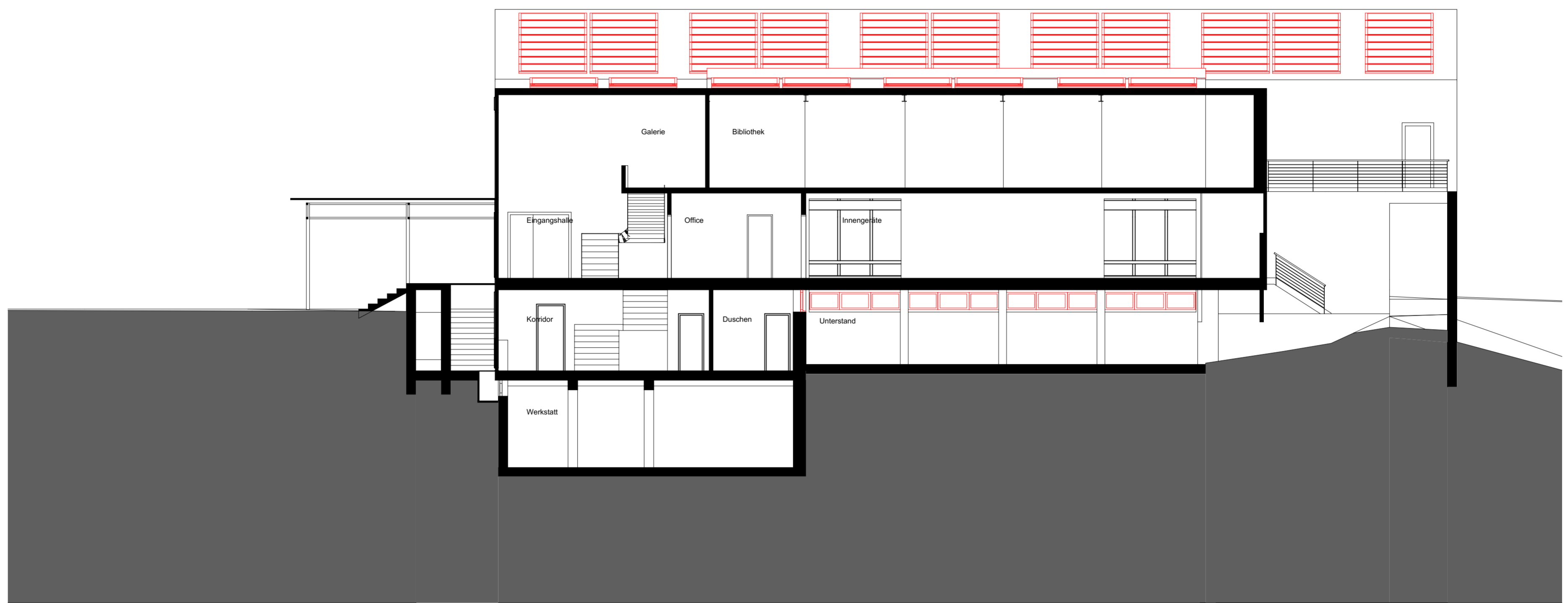
k2p Architekten GmbH Gurlzellenstrasse 31 2502 Biel Tel. 032 328 50 00 Fax 032 328 50 01 mail@k2parchitekten.ch www.k2parchitekten.ch



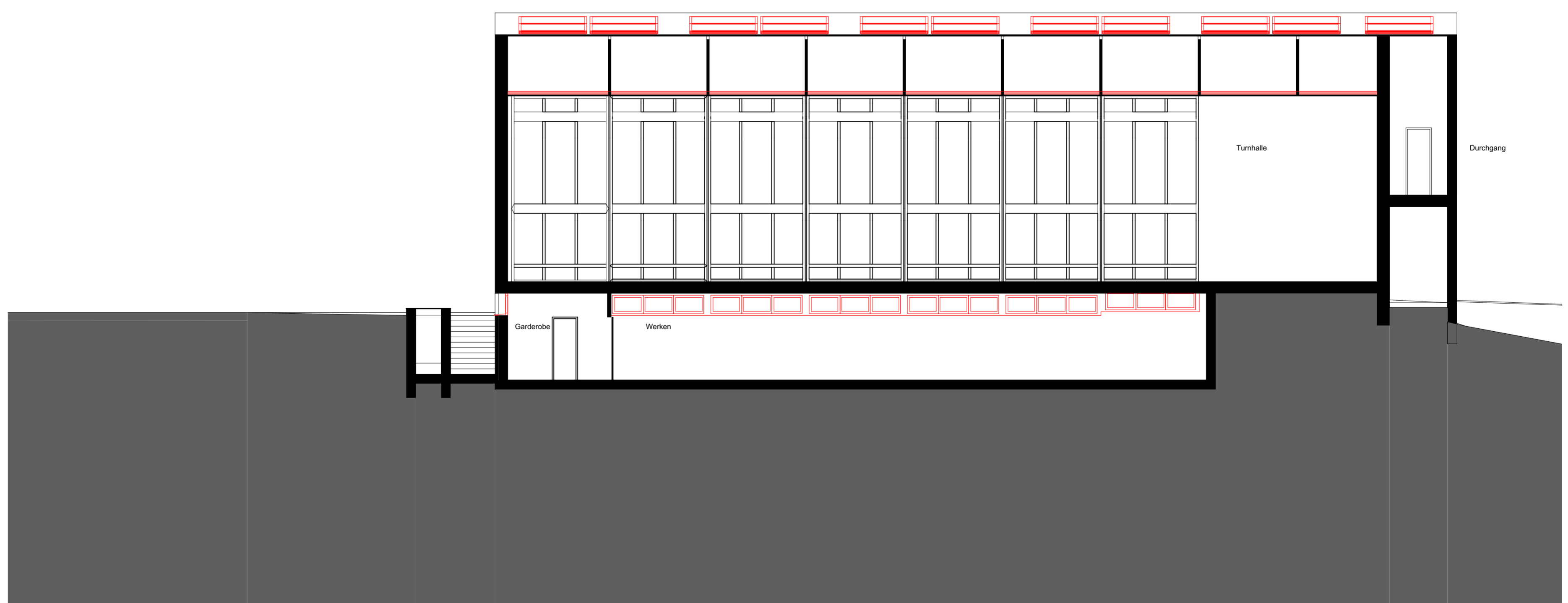
Schnitt C-C



Schnitt D-D



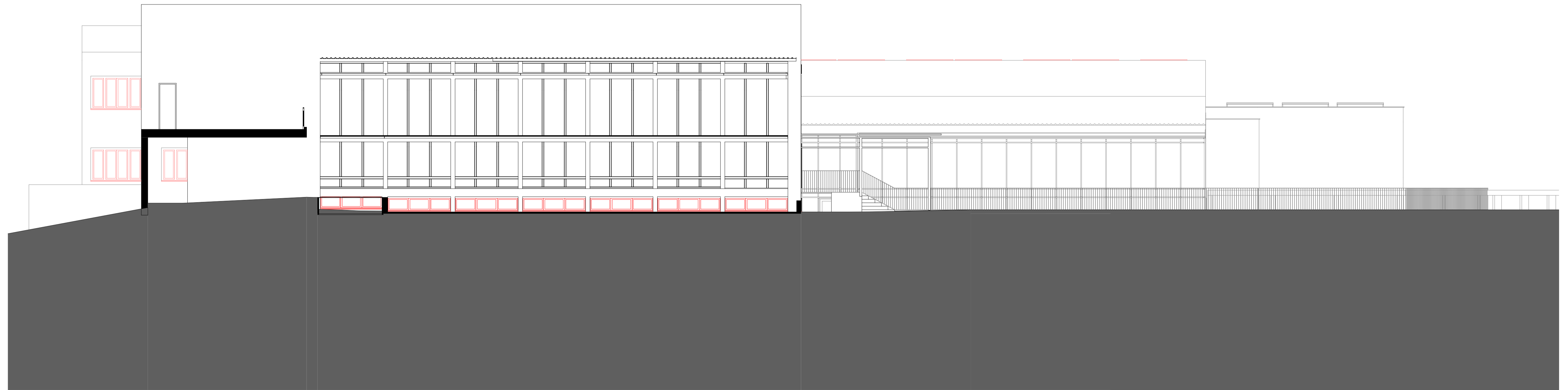
Schnitt E-E



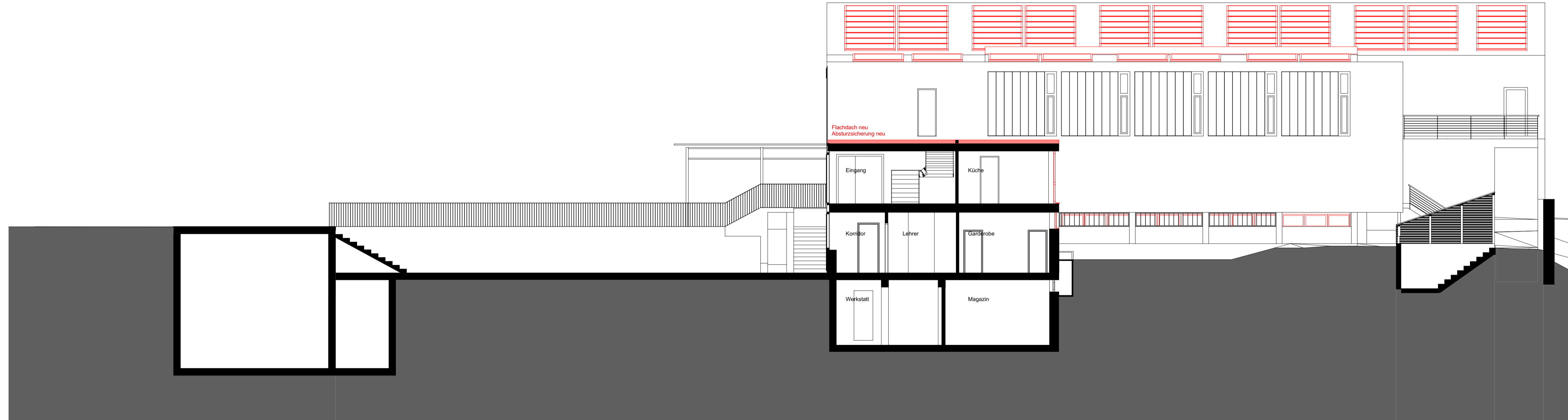
Schnitt F-F



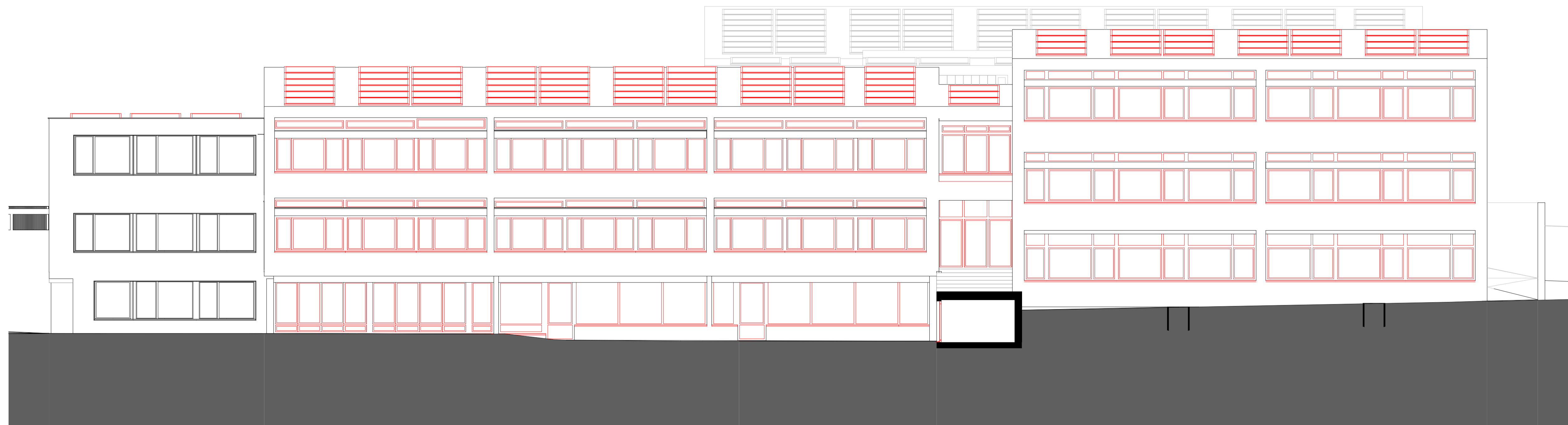
Fassade Nord-West 1



Fassade Nord-West 2

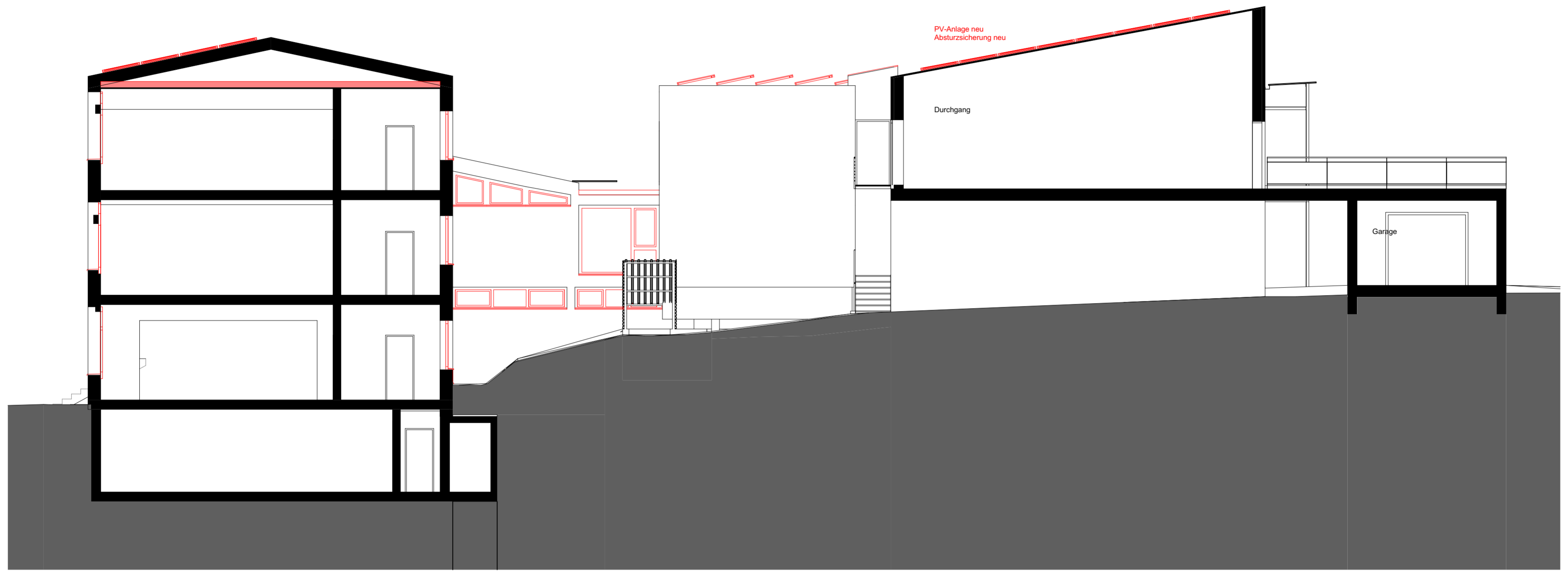


Fassade Süd-Ost 1

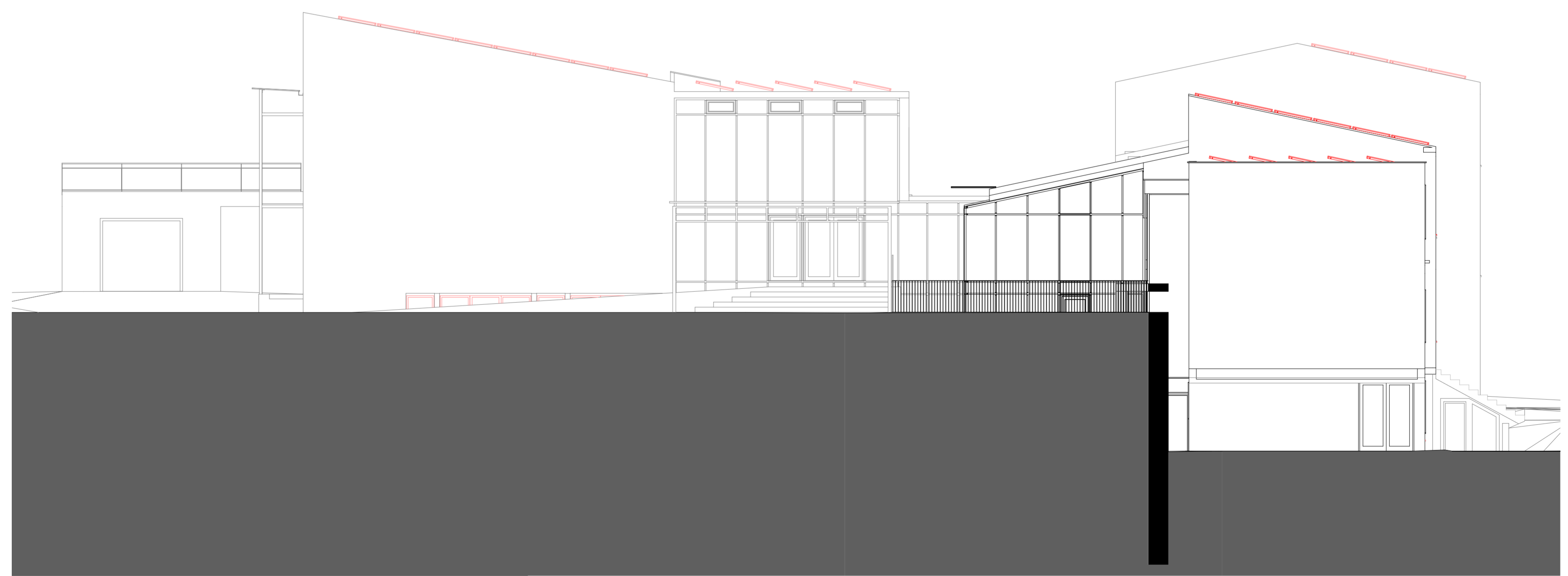


Fassade Süd-Ost 2

311	Einwohnergemeinde Safnern Sanierung Gebäudehülle Rächli Bergstrasse, 2553 Safnern		
	Projekt	Fassaden NO SW	Mst: 1:100
Pl.Nr. : 311-2/111	Datum: 11.01.2023	Rev. : 29.03.2023	Format: 52 60
k2p Architekten GmbH Gurzelenstrasse 31 2502 Biel Tel. 032 328 50 00 Fax 032 328 50 01 mail@k2parchitekten.ch www.k2parchitekten.ch			



Fassade Nord-Ost



Fassade Süd-West